

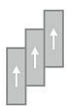
Metal

Overview

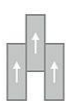
Feature	Description
Collection	Hot and Heavy
Style	Metal (C0059)
Product Type	LVT
Size	18" X 36"
Construction	Commercial LVT
Gauge	5 mm
Total Thickness	5 mm
Wear Layer	20 mil (0.5 mm)
Finish	M-Force™ Ultra
Surface Profile	Embossed
Edge Profile	Squared
Installation	Glue Down, Loose Lay
Installation Method	Brick Ashlar, Half Lap, Herringbone, Random
Recommended Adhesive	M95.0, M99, MS160, M700 Plus, or Total Bond Adhesive



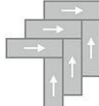
Recommended Installation Methods



Brick Ashlar



Half Lap



Herringbone



Random

Colorways



Proper Gray

Color code: 929
Style number: C0059



Golden Yellow

Color code: 132
Style number: C0059



Viva Gold

Color code: 258
Style number: C0059



My Precious

Color code: 268
Style number: C0059



Rave Red

Color code: 353
Style number: C0059



Vogue Violet

Color code: 464
Style number: C0059

Colorways



Freshwater Blue

Color code: 525
Style number: C0059



Tempo Teal

Color code: 556
Style number: C0059



Blue Steel

Color code: 585
Style number: C0059



Lemon Lime

Color code: 631
Style number: C0059



On The Line

Color code: 859
Style number: C0059



So Fetch

Color code: 959
Style number: C0059

Testing

Feature	Description
Classification	(ASTM F1700) Class III, Type B, Embossed
Squareness	(ASTM F2421) ± 0.10 in
Size and Tolerance	(ASTM F2421) ± 0.016 in
Thickness	(ASTM F386) $\pm .005$ in
Flexibility	(ASTM F137) Passes
Dimensional Stability	(ASTM F2199) Passes
Static Load Limit	(ASTM F970) 1000 psi
Residual Indentation	(ASTM F1914) Passes
Resistance to Chemicals	(ASTM F925) Passes
Resistance to Light	(ASTM F1515) Passes
Resistance to Heat	(ASTM F1514) Passes
Radiant Flux	(ASTM E648) Class 1
Smoke Density	(ASTM E662) ≤ 450
Wear Layer Thickness	20 mil (0.5 mm)
Lightfastness	(ASTM F1515) Passes

Sustainability

Feature	Description
Embodied Carbon	11.9 kg CO2e/sq m2
Carbon Handprint	-12.5 kg CO2e/sq m2
Beyond Carbon Neutral	-0.595
EPD	EPD Vinyl Tile
Material Health	Free of Orthophthalates and Heavy Metals
LEED	Calculate LEED on Ecomedes
Mindful Materials	Participates in Mindful Materials Library
MindClick Rating	Achiever
Country of Origin	China

Packaging

Feature	Description
Pieces per Carton	4
Weight per Piece	8.34
Cartons Per Pallet	54
Square Feet per Carton	18
Weight per Carton	33.36

Warranties

Limited 20 Year M-Force Ultra Commercial Warranty